



protectiNGsheffield
FROM FLOODING

James Fletcher, Flood and Water Manager,
Sheffield City Council



Our Problem

- 2007 saw devastating city floods
- The anniversary is fast approaching
- The risk of a repeat is increasing – came close in 2012 and just this month
- Sheffield is vulnerable to fast flowing rivers
- Impact on property and lives
- Impact on economy and growth
- Doing nothing isn't an option

The Wicker under floodwaters in June 2007

Sheffield communities at risk



Hillsborough under floodwater - 2007

 **protectingsheffield**
FROM FLOODING

Look what happened in Cumbria, Leeds and York last winter – we don't want a repeat in Sheffield !

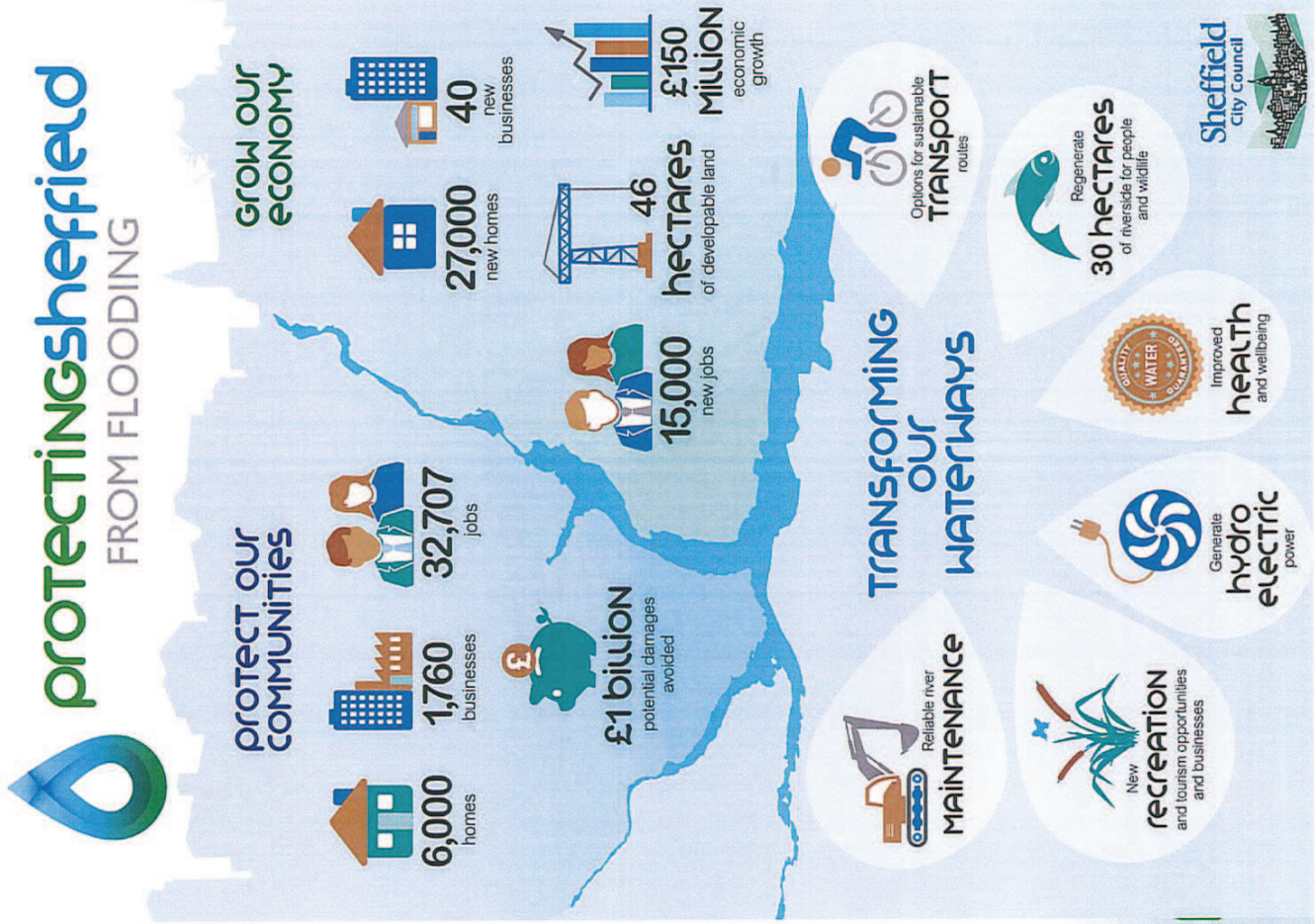


The River Sheaf came very close to bursting its banks
just this last month



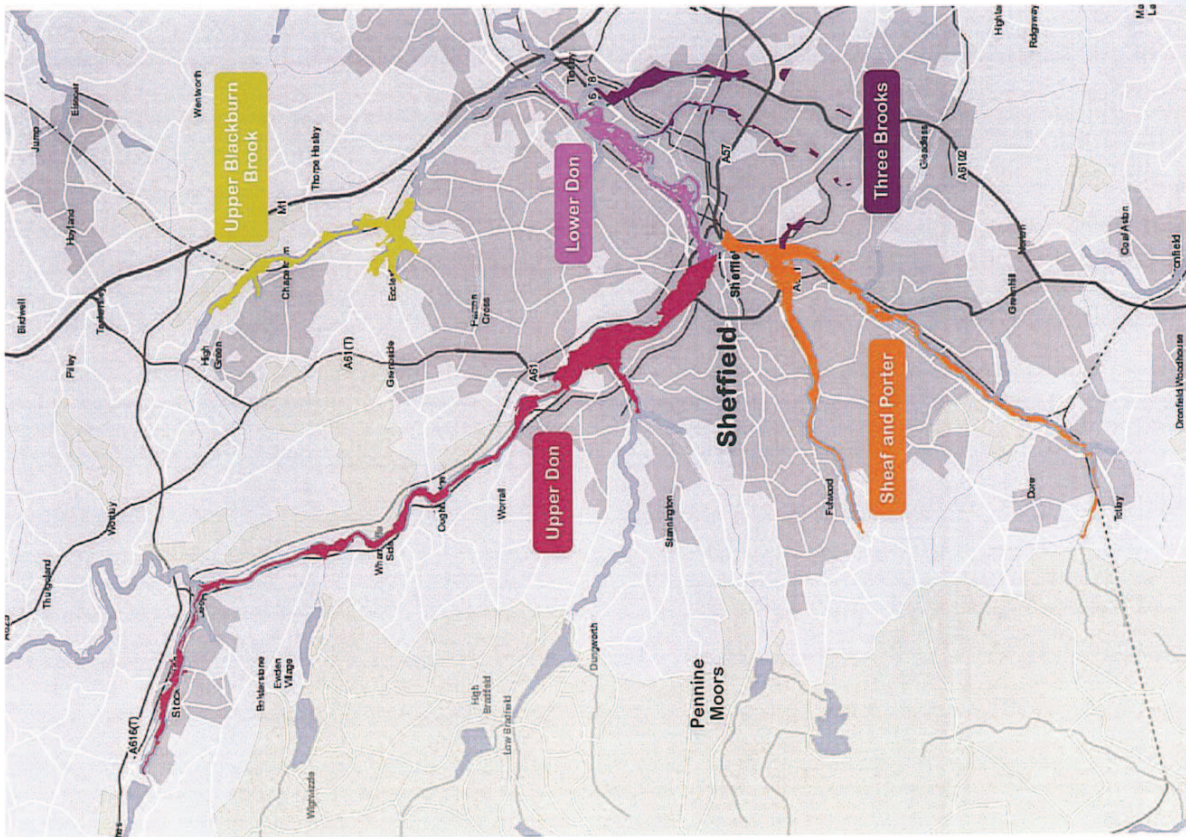
Our Aims - more than a flood programme

81% of public responses support our objective to protect communities



Our Solution

- £83 million capital investment programme to 2021
- Once a generation opportunity
- Now is the time to invest and protect the city



Where are we now?

- Building defences in the Lower Don Valley
- Complete Summer 2017



Where are we now?

- Started delivering the larger programme
- Met with Government – funding is identified
- Sheffield chosen to be the pilot core city for protection
- Consulted public on options – July to October 2016
- No detailed designs are in place
- Programme completion – 2021



Our Approach

Catchment-wide measures -

1. Keep the floodwater out of the city
2. Store floodwater temporarily in the city's open spaces
3. Contain in the river
4. Resilience
5. As few as 32% of responses disagreed with our approach

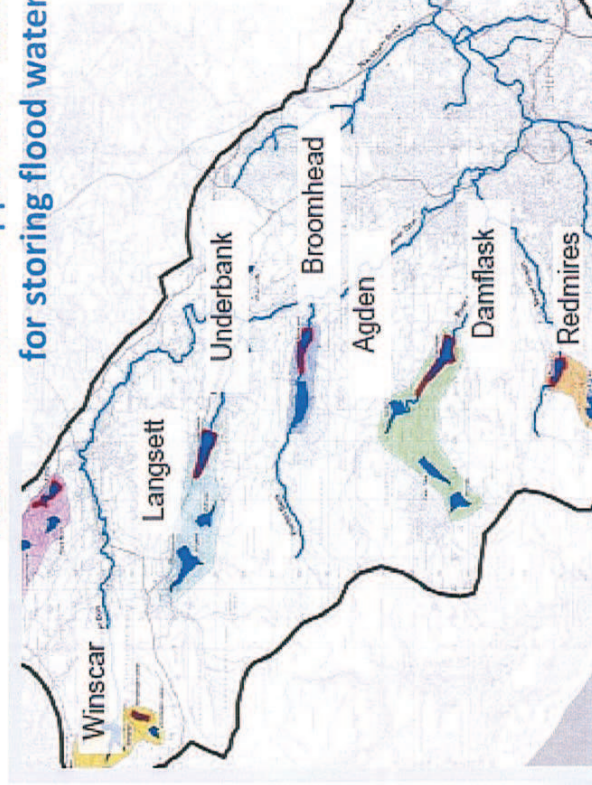
1 - Keep floodwater out of the city

- Upland management
 - Natural flood management
- } Early evidence shows marginal effectiveness
- Part of the programme
 - Longer term measures to combat climate change effects

• Hold in the reservoirs

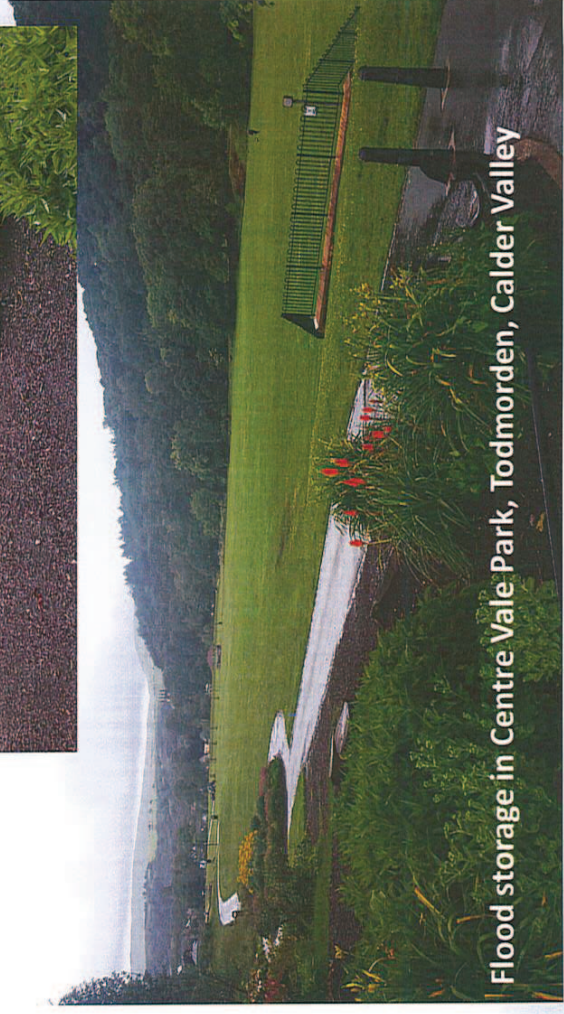


Reservoirs in the Upper Don Valley for storing flood water

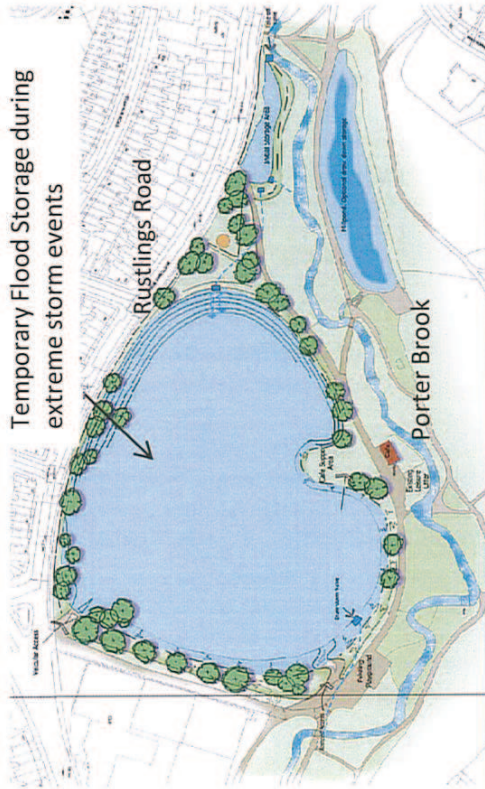


2 - Store floodwater temporarily in the city's open spaces

- Creating temporary flood storage areas in the floodplains deliver considerable protection benefits by 'slowing the flow'
- Options are in parks, woodland, and river valleys
- Consulted on storage options
- Capital investment now to protect communities by 2021



Option to store floodwater in Endcliffe Park



- ... and improve the Park
- soft re-landscaping
- better drainage;
- improved facilities



 **protectingsheffield**
FROM FLOODING

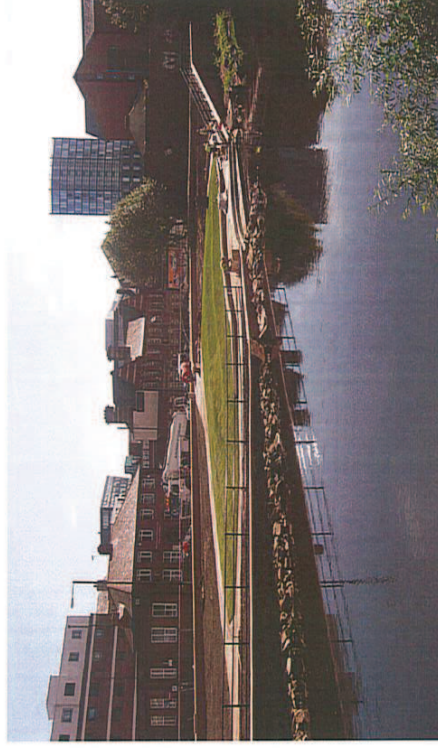
3 – Contain in the river

- Build more defences that enhance the riverside -

Matilda Street defences (2015)



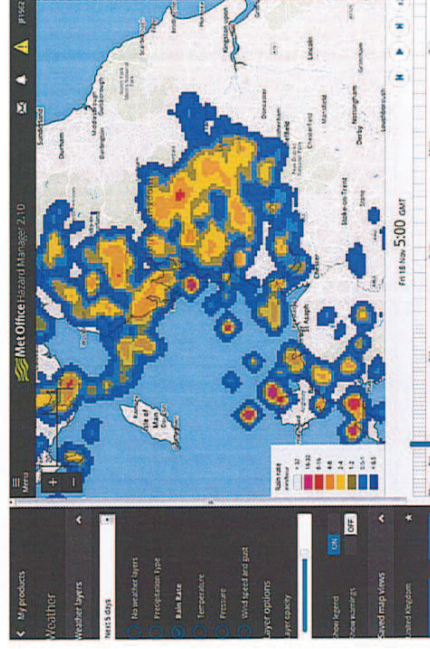
Nursery Street defences (2012)



- Remove obstructions to flow
- Capital investment now to protect communities by 2021
- Consulted on defence options

4 – Resilience

- Reduce the impact when flooding happens
- Improved ‘business as usual’ plus new measures
- Emergency planning and response
- Warning systems
- Keep the rivers clear and well maintained
- Resilient properties

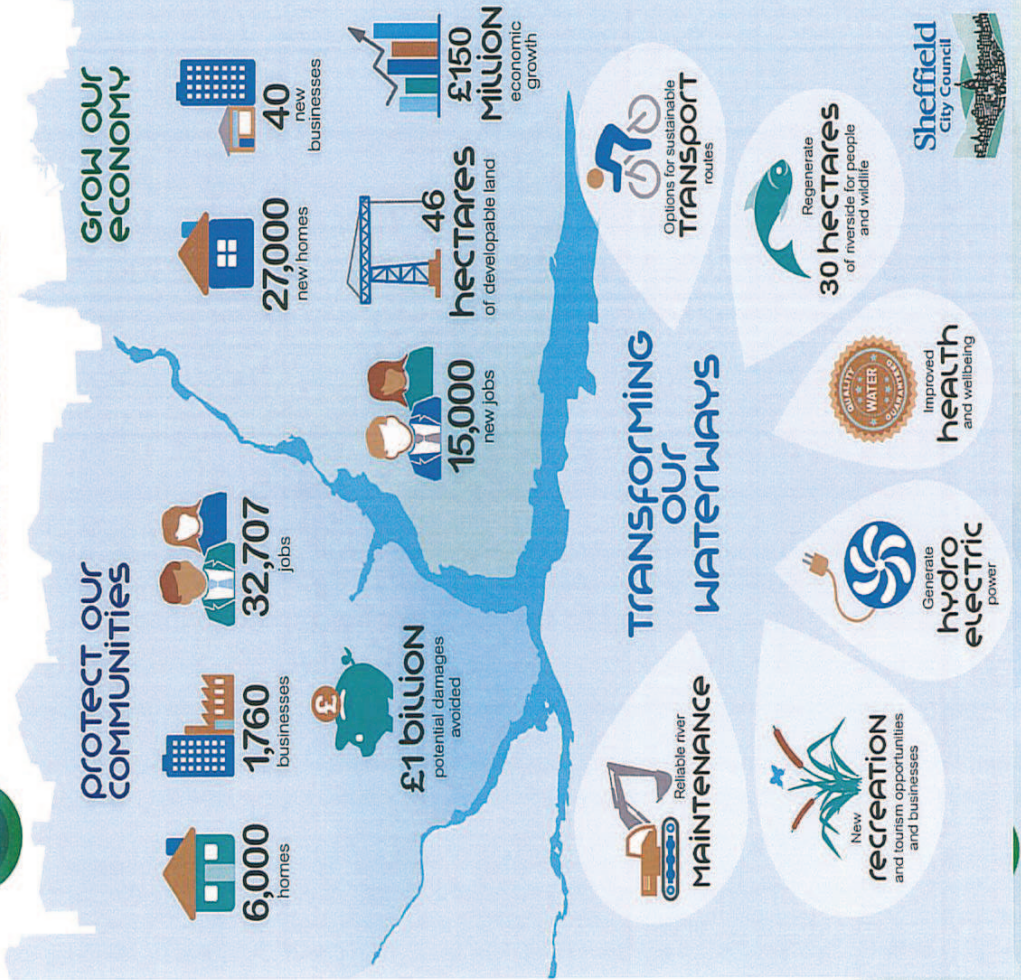


The Next Steps

- Decide on options by **January 2017**
- Work with interested groups and affected parties to develop options in **early 2017**
- Case for investment to Government - **Summer 2017**
- Develop detailed proposals and consult the public – **2018**
- Construction : **2019 - 2021**

We need your support

protectingsheffield FROM FLOODING



Questions



This page is intentionally left blank